

Patient information

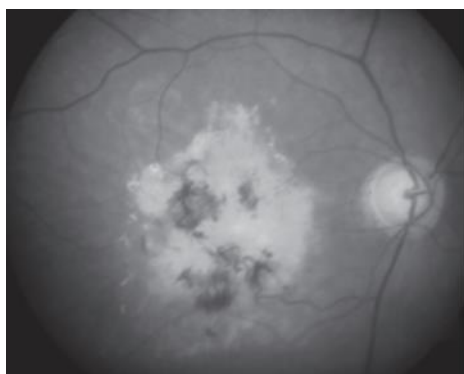
Advanced Age Related Macular Degeneration

St Pauls Eye Department

This leaflet gives information and advice for patients diagnosed with Advanced AMD What is Advanced AMD?

Age Related Macular Degeneration (AMD) is a disease of your macula, which is the central part of the light sensitive tissue at the back of your eye called the retina. It can lead to loss of central vision.

Advanced AMD occurs because of long-standing macular degeneration. In Advanced AMD the disease has progressed to an end stage which is not treatable.



An example of an eye affected with Advanced AMD showing scarring.

Although treatment for your condition is not available, there is plenty of help available to assist you in making the best use of your remaining vision. In particular, side vision (peripheral vision) is not affected and can be used for many tasks.

Support

It is possible to lead a full, successful, and productive life with visual impairment, given the right help, support and necessary adaptations.

It is often helpful to speak to someone who has already gone through this process and has managed to organise their life to minimise their disability.

Help and support is available please contact the Macular Disease Society, Bradbury Centre, Royal National Institute for the Blind and other support agencies as a first step.

Talking through your problems and difficulties with professionals or others with sight difficulties can often help.

Difficulties getting out and about

At times leaving the house or workplace may pose some difficulties. Crossing roads, using public transport and mobility problems all contribute to the barriers if you have difficulties with your sight.

Rehabilitation help and support is available and may need to be tailored to your particular requirements.

There is no reason that these difficulties cannot be overcome with advice and support.

Effects of the rest of the family

The whole family will be affected by your diagnosis and visual impairment. It is important that family members are involved in the adjustment process.

Living with Advanced AMD

Some of the difficulties that patients with advanced AMD report are:

Difficulties reading

Help is available through our opticians in the form of a Low Vision Assessment (LVA) which includes checking your glasses prescription, looking into usefulness of various low vision aids such as magnifiers and telescopes, these will be given to you on loan.

Other independent help is available in the form of Easy Readers or CCTV adaptations.

Large print book and audio tapes are available from local libraries.

Difficulty seeing faces and recognising people

Difficulty managing at home

Help for managing at home maybe available from local social services, Bradbury Centre (Liverpool Voluntary Society for the Blind), volunteer services or societies. Contact details are on the back of this leaflet.

If you are registered as sight impaired or severely sight impaired, then you will be assessed for any help or aids you need at home. If you have poor vision in both eyes, ask your ophthalmologist if you are eligible to be registered as sight impaired if you have not been already.

Difficulty managing at work

Visual impairment may cause significant difficulties within the workplace. You may no longer be able to drive or perform tasks that previously you were able to do. Some of these difficulties can be overcome by use of computers which can enlarge print very easily or by use of other adaptations. Different work patterns or roles may need to be arranged and negotiated.

Help with this is available from the Support Services Liaison Officer (based in St Paul's Outpatients Department) who will be able to advise you on your particular difficulties and circumstances. They can advise on where to direct your enquiries and source the right help and advice.

Feedback

Your feedback is important to us and helps us influence care in the future.

Following your discharge from hospital or attendance at your outpatient appointment you will receive a text asking if you would recommend our service to others. Please take the time to text back, you will not be charged for the text and can opt out at any point. Your co-operation is greatly appreciated.

Further Information

Eye Clinic Liaison Officer
St. Paul's Out-patients Department
Tel: 0151 706 3995
Text phone number: 18001 0151 706 3995

St Paul's Eye Emergency Department
Royal Liverpool University Hospital
Tel: 0151 706 3949
Text phone number: 18001 0151 706 3949

Bradbury Fields
Tel: 0151 221 0888
Web: www.bradburyfields.org.uk
Email: info@bradburyfields.org.uk

Macular Disease Society (MDS)
Tel: 0845 241 2041
Email: info@maculardisease.org
Web: www.maculardisease.org

Royal National Institute for the Blind (RNIB)
Helpline Tel: 0303 123 9999
Email: helpline@rnib.org.uk
Web: www.rnib.org.uk

St Paul's Eye Appeal
Royal Liverpool Hospital
Tel: 0151 706 4291
Email: info@eyecharity.com
Web: www.eyecharity.com

Author: St Paul's Eye Unit
Review Date: March 2026

All Trust approved information is available on request in alternative formats, including other languages, easy read, large print, audio, Braille, moon and electronically.

يمكن توفير جميع المعلومات المتعلقة بالمرضى الموافق عليهم من قبل انتمان المستشفى عند الطلب بصيغ أخرى، بما في ذلك لغات أخرى وبطرق تسهل قراءتها وبالحروف الطباعية الكبيرة وبالصوت وبطريقة برايل للمكفوفين وبطريقة مون والإلكترونية.

所有經信托基金批准的患者資訊均可以其它格式提供，包括其它語言、易讀閱讀軟件、大字

體、音頻、盲文、穆恩體 (Moon) 盲文和電子格式，敬請索取。

در صورت تمایل میتوانید کلیه اطلاعات تصویب شده توسط اتحادیه در رابطه با بیماران را به اشکال مختلف در دسترس داشته باشید، از جمله به زبانهای دیگر، به زبان ساده، چاپ درشت، صوت، خط مخصوص کوران، مون و بصورت روی خطی موجود است.

زانیاری پیوندیدار بهو نهخوشانهی لهلایین تراستهوه پهسهند کراون، نهگەر داوا بکرنیت له فورماتهکانی تردا بریتی له زمانهکانی تر، نیزی رید (هاسان خویندنهوه)، چاپی گهواره، شریتی دهنگ، هیلی موون و ئهلیکترۆنیکه هیه.

所有经信托基金批准的患者信息均可以其它格式提供，包括其它语言、易读阅读软件、大字体、音频、盲文、穆恩体 (Moon) 盲文和电子格式，敬请索取。

Dhammaan warbixinta bukaanleyda ee Ururka ee la oggol yahay waxaa marka la codsado lagu heli karaa nuskhado kale, sida luqado kale, akhris fudud, far waaweyn, dhegeysi, farta braille ee dadka indhaha la', Moon iyo nidaam eletaroonig ah.