

Patient information

Intracranial Pressure Monitoring (ICP)

Critical Care Department

Aintree Hospital

What is Intracranial Pressure (ICP) Monitoring?

ICP monitoring is done by inserting a metal ICP bolt through the skull to measure the pressure of the brain and surrounding tissue. This is usually performed by a neurosurgeon by the bedside while the patient is under sedation.

Why is it being done?

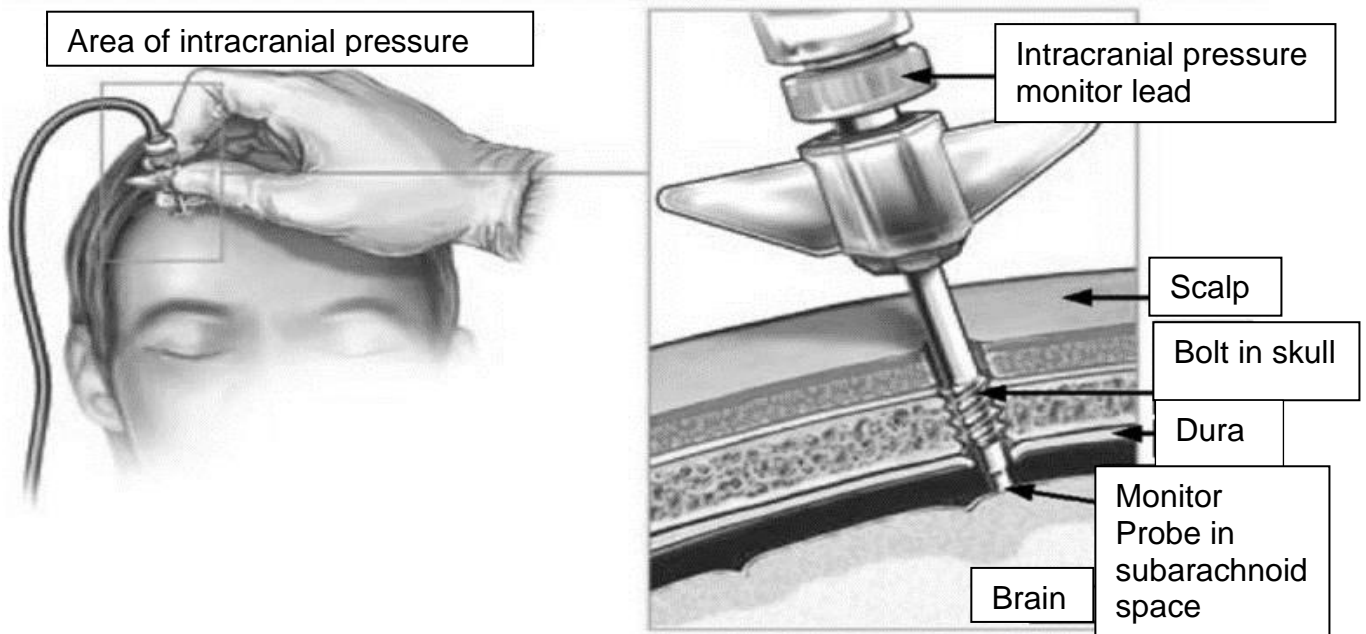
- ICP monitoring is usually done for patients with severe traumatic brain injury (TBI). Healthcare providers are able to monitor and maintain optimal brain pressure to ensure the best outcome possible for the patient.
- It can also inform healthcare providers of any deterioration such as brain swelling or bleeding to prompt further actions such as scans or giving medicine to control the brain pressure.
- The ICP bolt is not permanent and will usually stay in for several days until the risk of brain swelling from TBI becomes lower.

What are the risks of ICP bolt insertion?

The risk includes:

- Infection.
- Bleeding.
- Seizure.
- Damage to the brain tissue.

While the ICP bolt insertion is usually only performed when necessary to help us treat the patient, all steps will be taken to minimise the risks.



Feedback

Your feedback is important to us and helps us influence care in the future.

Following your discharge from hospital or attendance at your outpatient appointment you will receive a text asking if you would recommend our service to others. Please take the time to text back, you will not be charged for the text and can opt out at any point. Your co-operation is greatly appreciated.

Further information

**Critical Care Department
Aintree University Hospital
Lower Lane
Fazakerley
Liverpool
L9 7AL**

Telephone: 0151 529 3790

**Author: Critical Care Department, Aintree site.
Review date: January 2027**

All Trust approved information is available on request in alternative formats, including other languages, easy read, large print, audio, Braille, moon and electronically.

يمكن توفير جميع المعلومات المتعلقة بالمرضى الموافق عليهم من قبل ائتمان المستشفى عند الطلب بصيغ أخرى، بما في ذلك لغات أخرى وبطرق تسهل قراءتها وبالحروف الطباعية الكبيرة وبالصوت وبطريقة برايل للمكفوفين وبطريقة مون والإلكترونية.

所有經信托基金批准的患者資訊均可以其它格式提供，包括其它語言、易讀閱讀軟件、大字

體、音頻、盲文、穆恩體 (Moon) 盲文和電子格式，敬請索取。

در صورت تمایل می‌توانید کلیه اطلاعات تصویب شده توسط اتحادیه در رابطه با بیماران را به اشکال مختلف در دسترس داشته باشید، از جمله به زبانهای دیگر، به زبان ساده، چاپ درشت، صوت، خط مخصوص کوران، مون و بصورت روی خطی موجود است.

زانیاری پښوهندیدار بهو نه‌خوشانه‌ی له‌لایښ تراسته‌وه پښه‌ند کراون، نه‌مگر داوا بکړیت له فورماته‌کانی تردا بریتي له زمانه‌کانی تر، نيزی رید (هاسان خویندنه‌وه)، چاپی گه‌وره، شریتي دهنګ، هیلې موون و نلېکترونیکی همیه.

所有经信托基金批准的患者信息均可以其它格式提供，包括其它语言、易读阅读软件、大字
体、音频、盲文、穆恩体 (Moon) 盲文和电子格式，敬请索取。

Dhammaan warbixinta bukaanleyda ee Ururka ee la oggol yahay waxaa marka la codsado lagu heli karaa nuskhado kale, sida luqado kale, akhris fudud, far waaweyn, dhegeysi, farta braille ee dadka indhaha la', Moon iyo nidaam eletaroonig ah.